

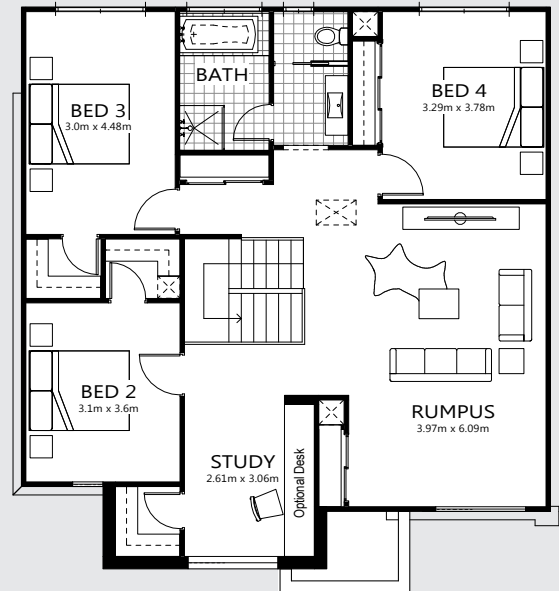
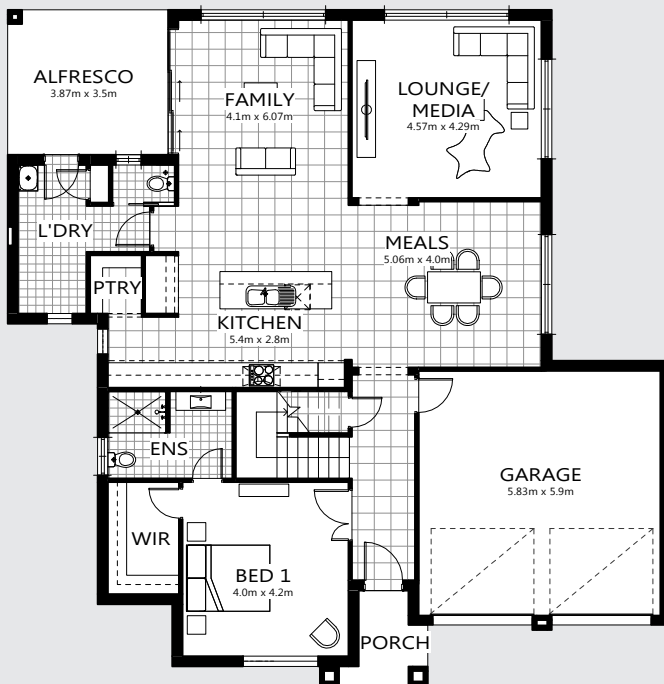


# kensington 348

HOUSE & LAND \$792,011

now  
selling

tahmoor  
thirlmere  
park



4 3 2

Total Area<sup>†</sup> 347.53m<sup>2</sup>  
Block size 703.8m<sup>2</sup>

Lot 8  
Off Thirlmere Way,  
Tahmoor, NSW 2573

### PACKAGE FEATURES

- Glazed external entry door
- Reverse cycle air-conditioning
- Satin chrome lever door handles
- Carpet & tiles throughout
- Basswood timber blinds
- Stone kitchen benchtops
- S.S. dishwasher & microwave

- 900mm S.S. canopy rangehood
- Hettich soft close mechanisms
- Wall-hung bathroom vanities
- Keyed alike window locks
- Timber architrave & skirting
- Fitted fly screens
- Border tiles to bathroom & ensuite showers

### ALSO INCLUDES

- All site costs & connections
- Coloured concrete driveway
- Brick letter box
- H1 Slab with retaining as required
- Tiling to alfresco & porch

[www.thirlmerepark.com.au](http://www.thirlmerepark.com.au)

Malcolm Watt

0438 355 528



**BELLRIVER**  
COMMUNITIES

\* Includes garage, alfresco, porch & eaves. \* Images are for illustrative purposes only and may include options not included in price. Bellriver Homes reserves the right to change specifications & prices without notice. Some areas incur additional costs. INK2622-04