



# rosedale 234

HOUSE & LAND \$673,407

now  
selling

tahmoor  
thirlmere  
park

4 2 2

Total Area<sup>†</sup> 233.87m<sup>2</sup>  
Block size 703.8m<sup>2</sup>

Lot 7  
Off Thirlmere Way,  
Tahmoor, NSW 2573

### PACKAGE FEATURES

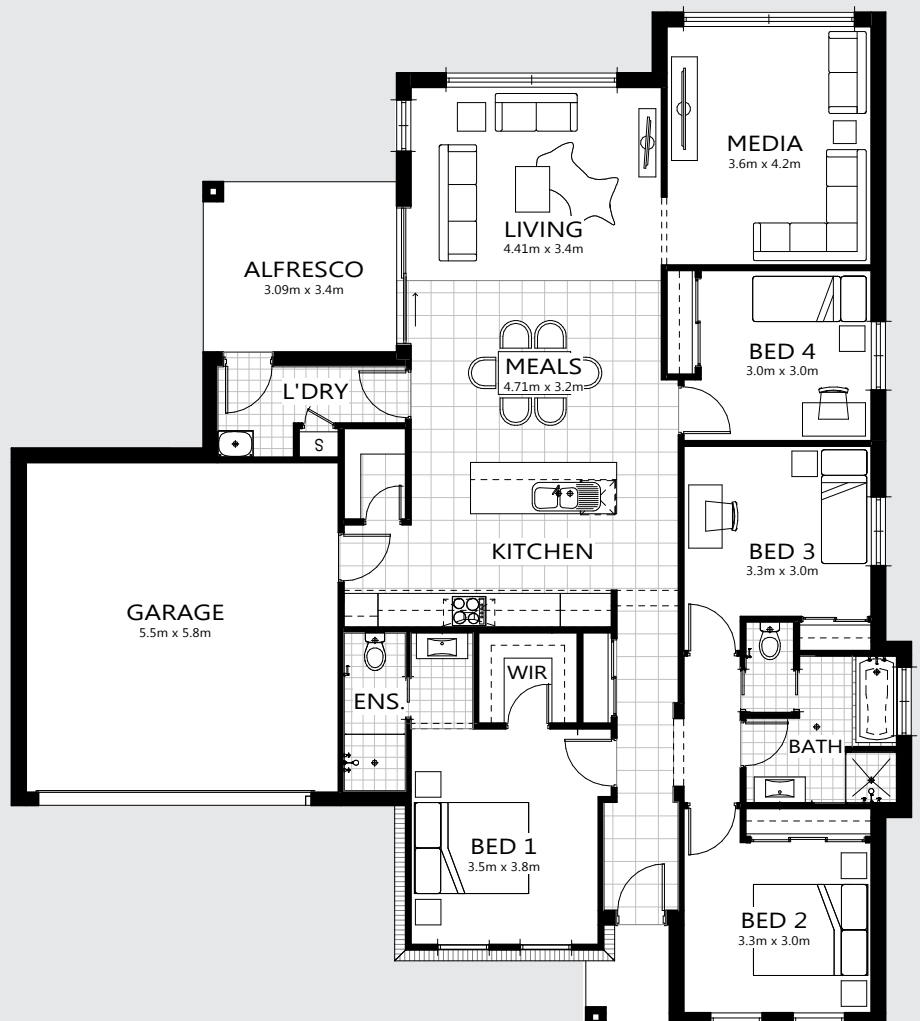
- Glazed external entry door
- Reverse cycle air-conditioning
- Satin chrome lever door handles
- Carpet & tiles throughout
- Basswood timber blinds
- Stone kitchen benchtops
- S.S. dishwasher & microwave
- 900mm S.S. canopy rangehood
- Hettich soft close mechanisms
- Wall-hung bathroom vanities
- Keyed alike window locks
- Timber architrave & skirting
- Fitted fly screens
- Border tiles to bathroom & ensuite showers

### ALSO INCLUDES

- All site costs & connections
- Coloured concrete driveway
- Brick letter box
- H1 Slab with retaining as required
- Tiling to alfresco & porch

Malcolm Watt 0438 355 528

[www.thirlmerepark.com.au](http://www.thirlmerepark.com.au)



<sup>†</sup> Includes garage, alfresco, porch & eaves. \* Images are for illustrative purposes only and may include options not included in price. Bellriver Homes reserves the right to change specifications & prices without notice. Some areas incur additional costs. INK2622-04